



**Accurate Vascular
Access. Anywhere.**

VeinViewer[®]

FLEX



The portable vein imaging leader.

- ✓ Most accurate with TrueView™ technology
- ✓ Brightest image, no need to dim the room
- ✓ Optimal green image clarity across all skin tones
- ✓ Harmless LED light, approved for all environments
- ✓ Ergonomic grip for ease of use

VeinViewer is clinically proven to:

- ✓ Improve first stick success by up to 100%
- ✓ Reduce time to IV access
- ✓ Reduce central lines placed due to difficult venous access by 30%
- ✓ Reduce procedure escalations
- ✓ Increase patient satisfaction by up to 100%

CHRISTIE 

VeinViewer[®]

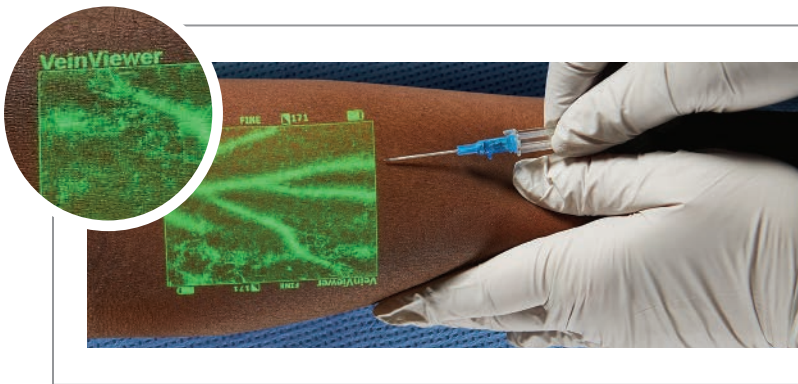
FLEX

Versatility to overcome any challenge.

VeinViewer[®] Flex operates as a handheld or mounted device, giving clinicians the ability to choose on a situation by situation basis. A built-in suite of imaging modes provides an ideal setting for every patient type giving you an assessment that is fast, efficient and thorough.

Any patient. Any environment.

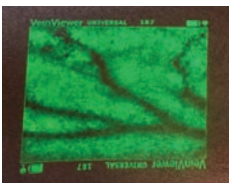
- ✓ Locate veins up to 10mm deep
- ✓ Locate valves and bifurcations
- ✓ Assess refill rate
- ✓ Make the best choice for your patient



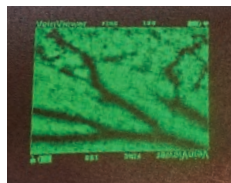
TrueView™

VeinViewer ensures accuracy and ease of use with the markets only in-focus indicator. When the projected image border is clear you can trust the vessel width shown to assist in catheter gauge selection.

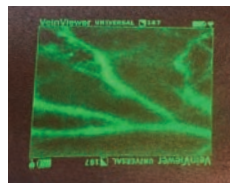
See things differently.



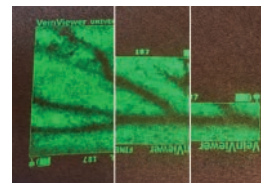
Universal



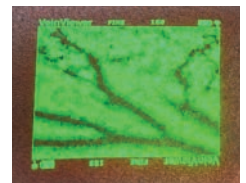
Fine Detail



Inverse



Resize



MaxBright

1-877-SEE-VEIN

Greater First Stick Success - Fewer PICC Lines - Increased Patient Satisfaction

CHRISTIE